

aka
 T: 416.702.8511
 F: 416.536.2671
 info@akarchitect.ca
 www.akarchitect.ca

allan killin architect inc.
 ICOMOS APH CAHP
 INTBAU OREC COBC
 237 Grenadier Road
 TORONTO ON M6R 1R9

VICTOR FORD AND ASSOCIATES INC
Landscape Architects
 955 Queen Street West, Loft 606
 Toronto, Ontario M6J 3X5
 Tel 416.703.0081
 Fax 416.703.0083
 design@victorford.ca

PNF
ENGINEERING INC
 BUILDING SERVICES ENGINEERS
 4-1290 Eglinton Ave. E
 Mississauga, ON, L4W 1K8
 Tel. (905) 825-5322
 Fax. (905) 825-0758
 dragon@pnfeng.com

TACOMA
ENGINEERS
 THE ART OF INTELLIGENT ENGINEERING
 GUELPH | 176 Speedvale Ave. West | Guelph, ON | N1H 1C3
 BARRIE | 570 Byrne Drive Unit M | Barrie, ON | L4N 9P6

PROJECT ADDRESS
 Fred Hamilton Park
 & Roxton Road Parkette
 Toronto, Ontario

Project Name:
Fred Hamilton Park

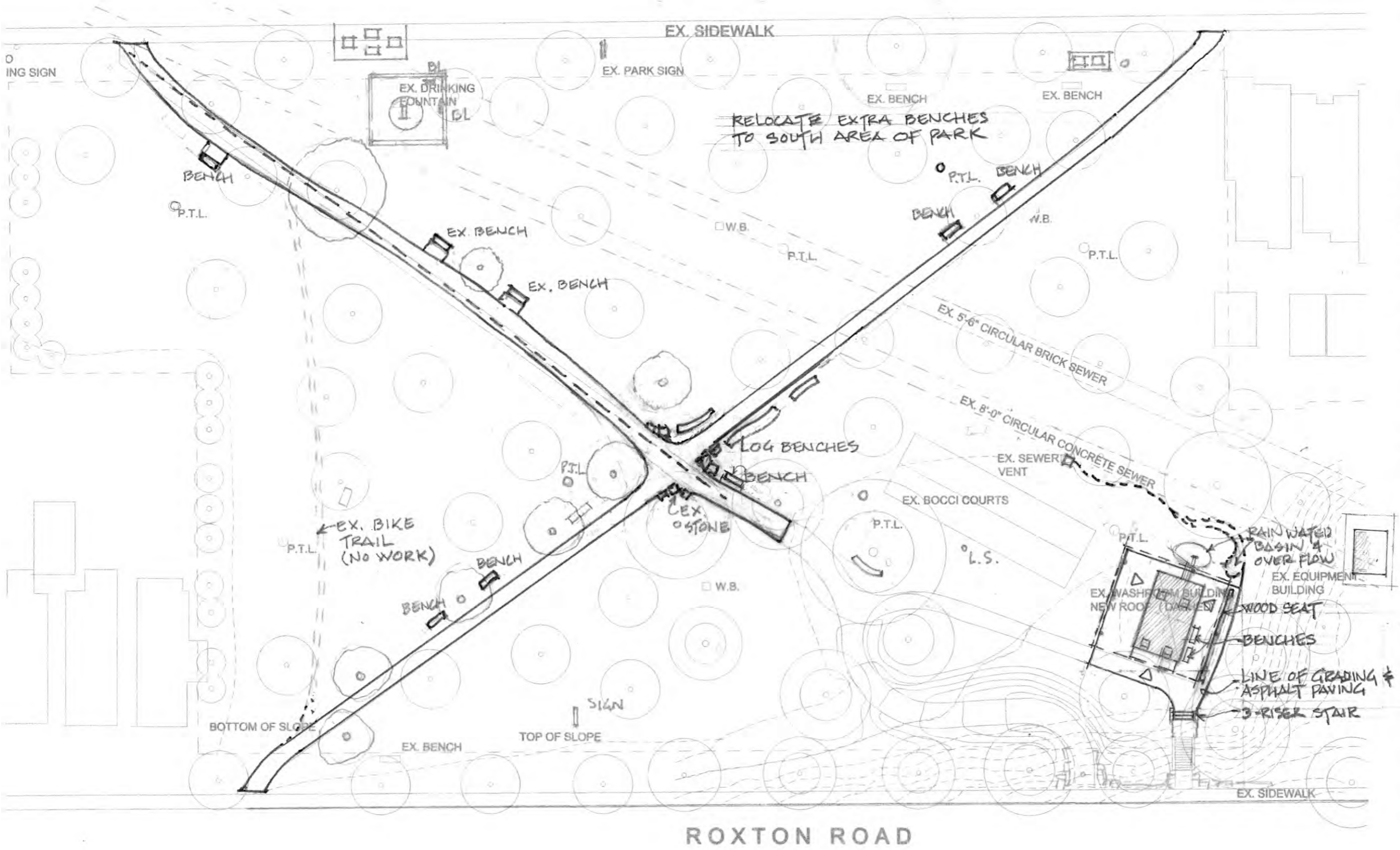
Date	Issued for
October 21, 2013	Review
03 Dec 2013	review

TORONTO
 Parks Forestry & Recreation
 www.toronto.ca/parks

Drawn SH Checked AK

SCALE: AS SHOWN

A00



aka
 T: 416.702.8511
 F: 416.536.2671
 info@akarchitect.ca
 www.akarchitect.ca

allan killin architect inc.
 ICOMOS APTI CAHP
 INTBAU OREC CGBC 237 Grenadier Road
 TORONTO ON M6R 1R9

VICTOR FORD AND ASSOCIATES INC
 Landscape Architects
 955 Queen Street West, Loft 606
 Toronto, Ontario M6J 3X5
 Tel 416.703.0081
 Fax 416.703.0083
 design@victorford.ca

PNF
 ENGINEERING INC
 BUILDING SERVICES ENGINEERS
 4-1290 Eglinton Ave. E
 Mississauga, ON, L4W 1K8
 Tel. (905) 625-5322
 Fax. (905) 625-0758
 dragan@pnfeng.com

TACOMA ENGINEERS
 THE ART OF INTELLIGENT ENGINEERING
 GUELPH | 176 Speedvale Ave. West | Guelph, ON | N1H 1C3
 BARRIE | 570 Bryne Drive Unit M | Barrie, ON | L4N 9P6

PROJECT ADDRESS
 Fred Hamilton Park
 & Roxton Road Parkette
 Toronto, Ontario

Project Name:
Fred Hamilton Park

Date	Issued for
03 Dec 2013	Review

Toronto
 Parks Forestry & Recreation
 www.toronto.ca/parks

Drawn SH Checked AK
 SCALE: 1:500

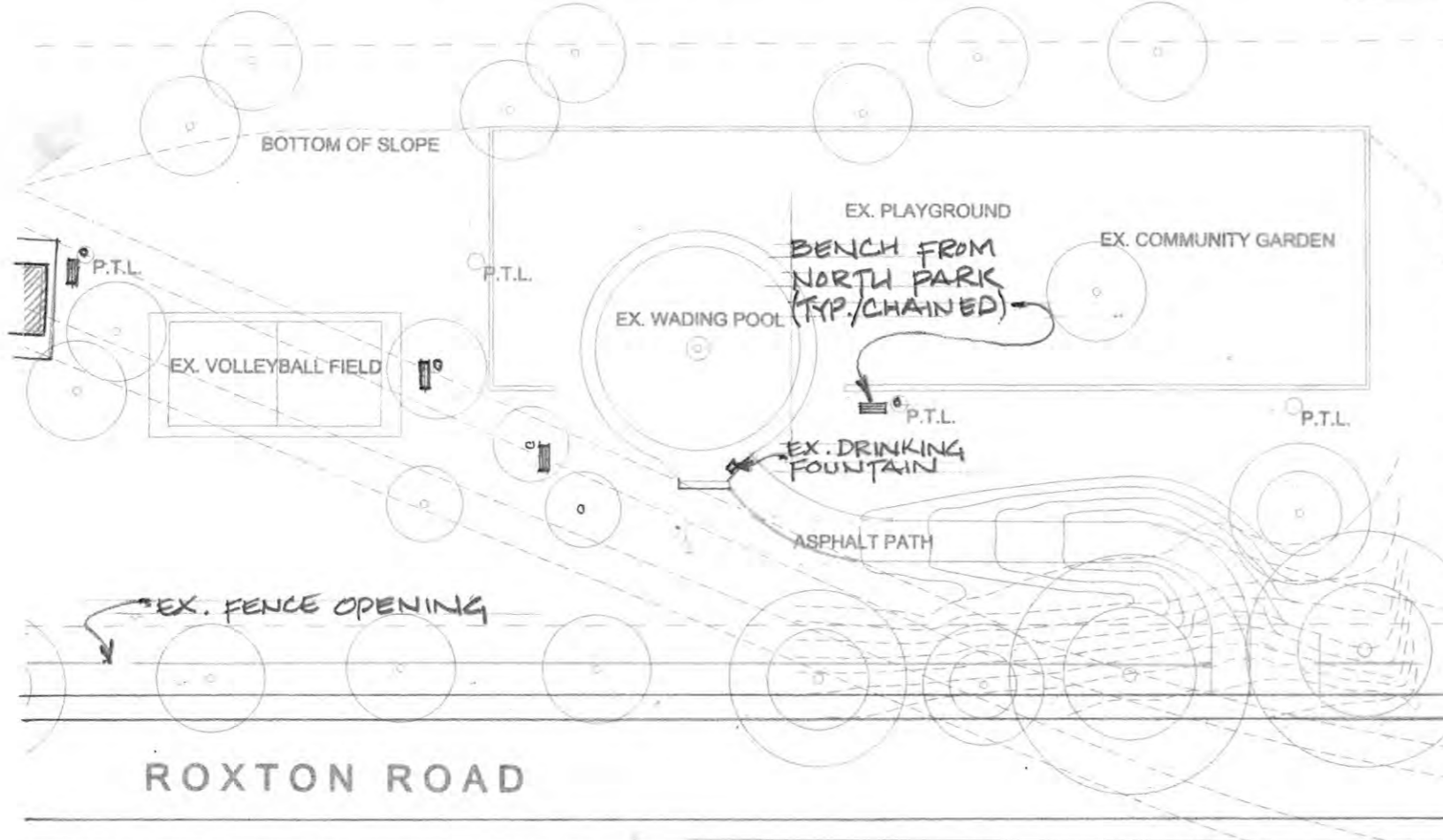
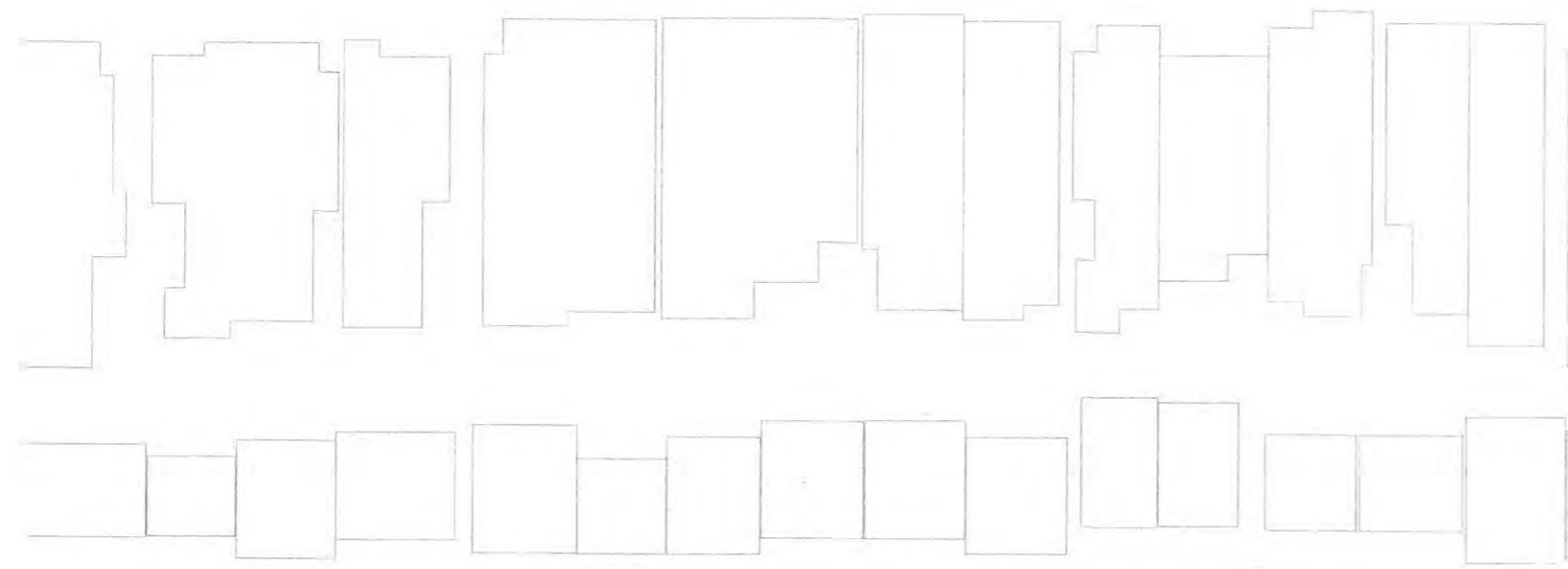
FRED HAMILTON PARK - NORTH

PROPOSED DETAIL SITE PLAN NORTH	01
	A3

A 01

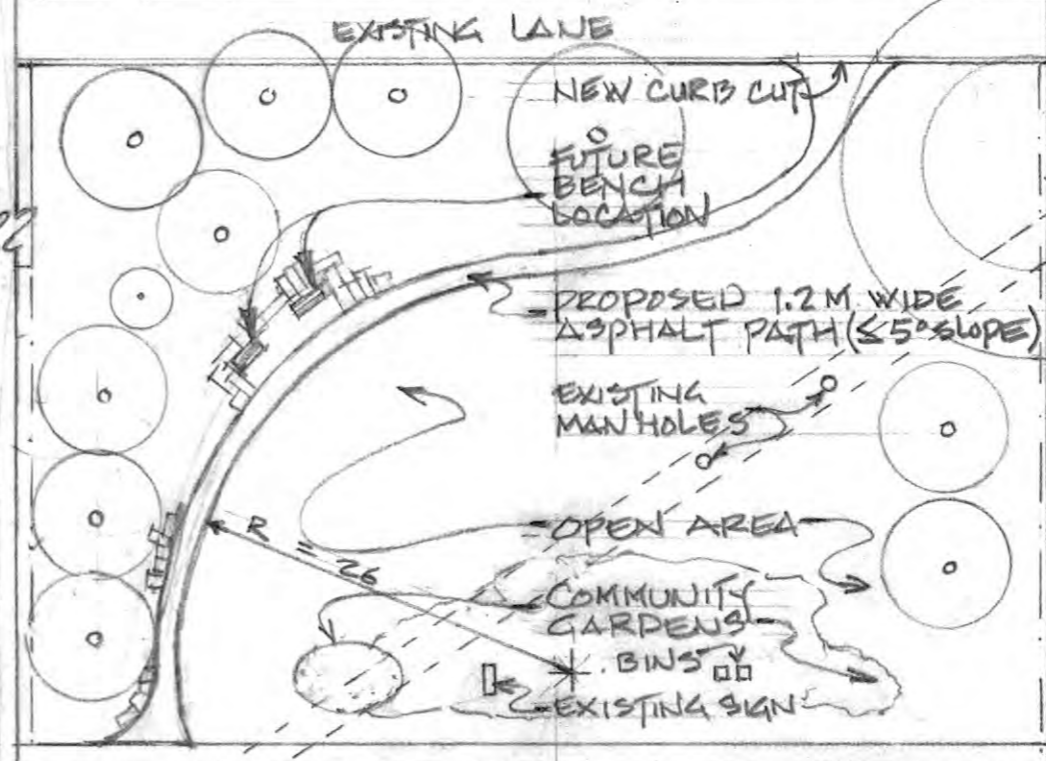
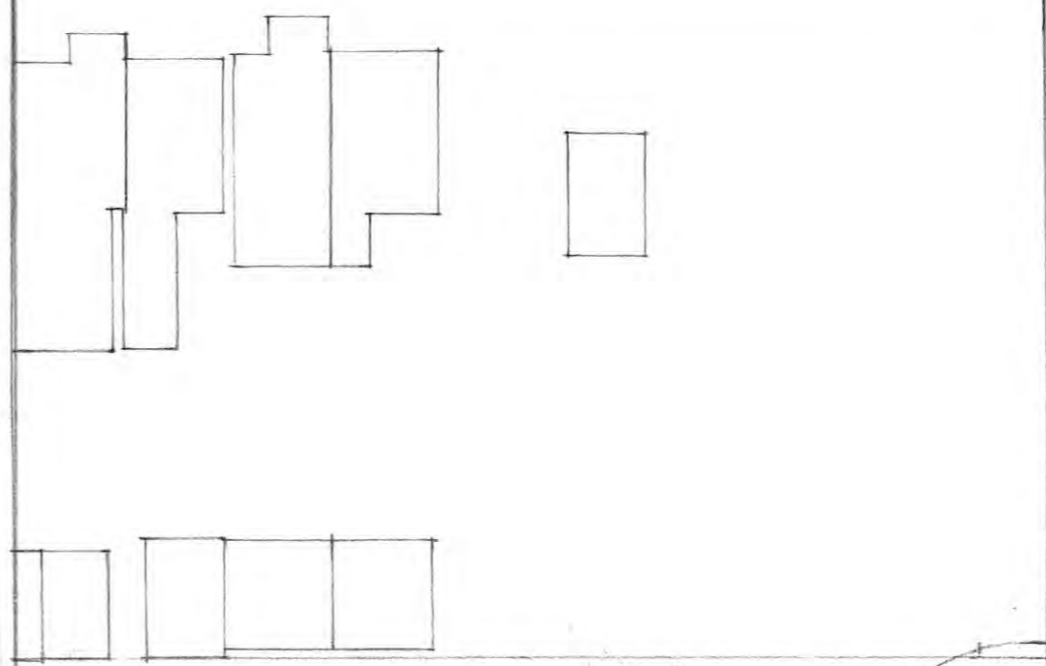
SHAW STREET

EX. SIDEWALK



ROXTON ROAD

FRED HAMILTON PARK - SOUTH



ROXTON ROAD PARKETTE

aka

T: 416.702.8511
F: 416.536.2671
info@akarchitect.ca
www.akarchitect.ca

allan killin architect inc.

ICOMOS APTI / CAHP
INTBAU / CIBC / CGBC 237 Grenadier Road
TORONTO ON M6R 1R9

**VICTOR FORD
AND ASSOCIATES INC**
Landscape Architects

955 Queen Street West, Loft 606
Toronto, Ontario M6J 3X5
Tel 416.703.0081
Fax 416.703.0083
design@victorford.ca

PNF
ENGINEERING INC

4-1290 Eglinton Ave. E
Mississauga, ON, L4W 1K8
Tel. (905) 625-5322
Fax. (905) 625-0758
dragon@pnfeng.com

TACOMA
UNIVERSITY

TACOMA ENGINEERS
THE ART OF INTELLIGENT ENGINEERING

GUELPH | 176 Speedvale Ave. West | Guelph, ON | N1H 1C3
BARRIE | 570 Byrnes Drive Unit M | Barrie, ON | L4N 9P9

PROJECT ADDRESS
Fred Hamilton Park
& Roxton Road Parkette
Toronto, Ontario

Project Name:
Fred Hamilton Park

Date	Issued for
03 Dec 2013	Review

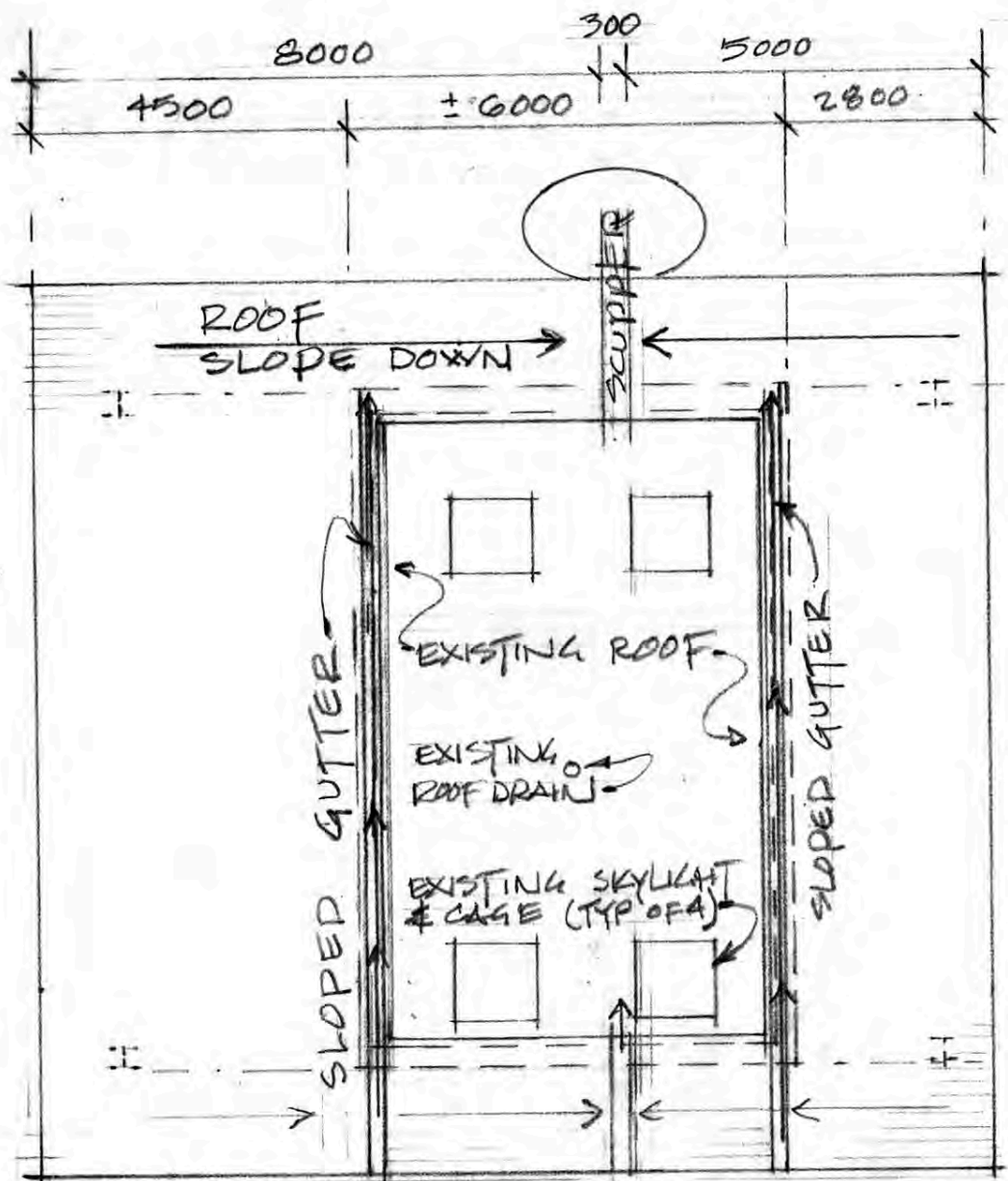
Toronto

Parks Forestry & Recreation
www.toronto.ca/parks

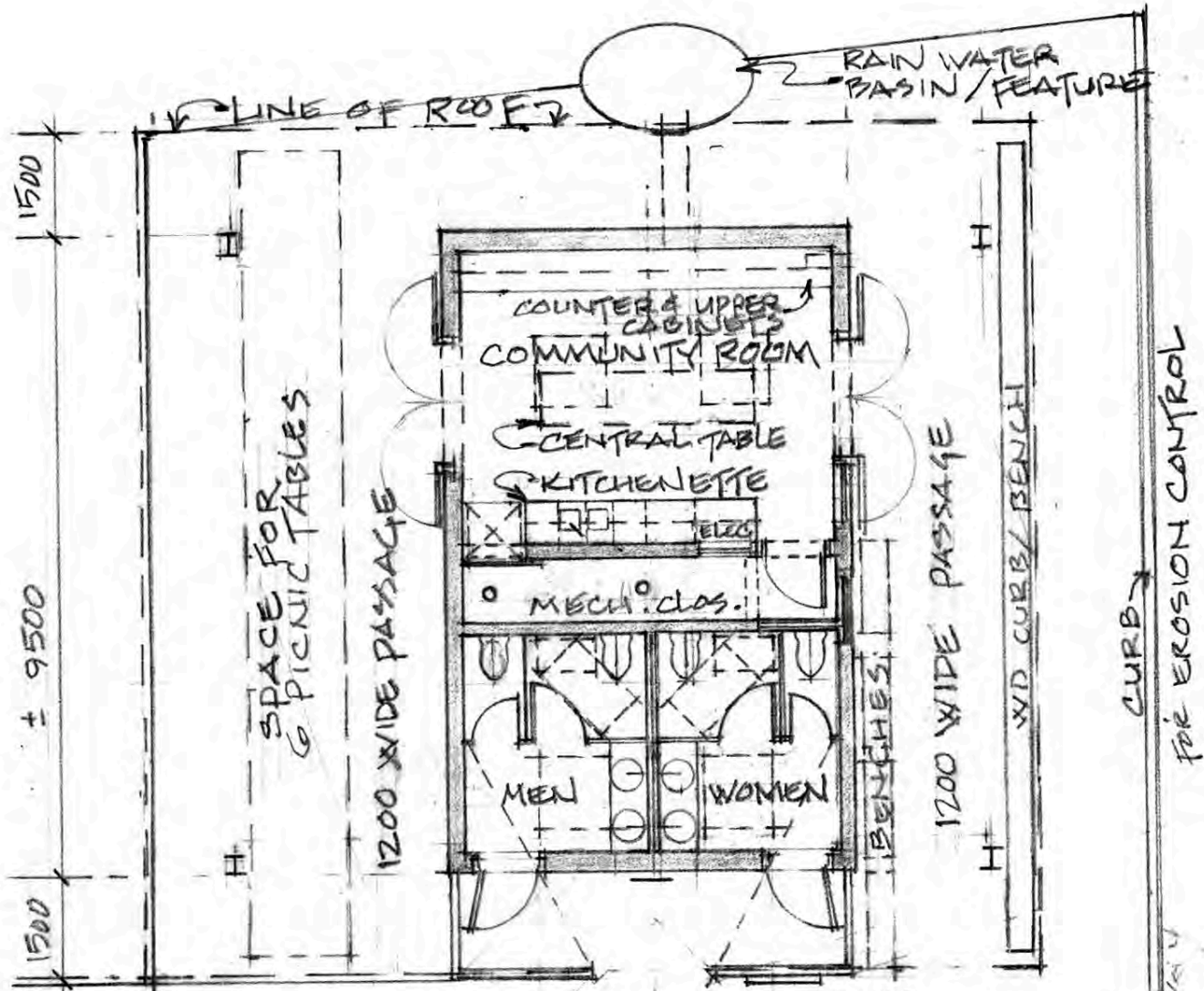
Drawn: SH | Checked: AK

SCALE: 1:500

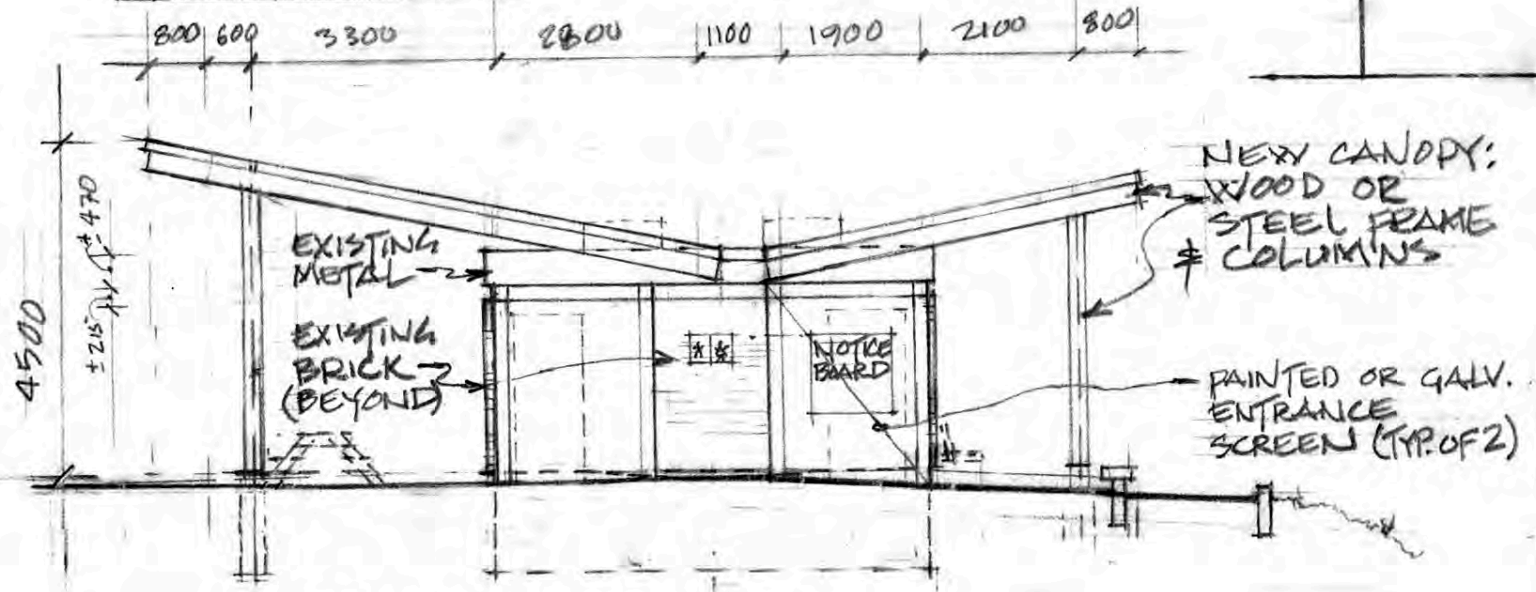
A02



ROOF PLAN



REGRADE & PAVE EXISTING ASPALT & UNIT PAVING TO MAX 5% SLOPE



WEST ELEVATION



aka
 T: 416.702.8511
 F: 416.536.2671
 info@akarchitect.ca
 www.akarchitect.ca

allan kilian architect inc.
 237 Grenadier Road
 TORONTO ON M6R 1R9

VICTOR FORD AND ASSOCIATES INC
 Landscape Architects
 955 Queen Street West, Loft 606
 Toronto, Ontario M6J 3X5
 Tel 416.703.0081
 Fax 416.703.0083
 design@victorford.ca

PNF ENGINEERING INC
 4-1290 Eglinton Ave. E
 Mississauga, ON, L4W 1K6
 Tel. (905) 625-5322
 Fax. (905) 625-0758
 dragon@pnfeng.com

TACOMA ENGINEERS
 THE ART OF INTELLIGENT ENGINEERING
 GUELPH | 176 Speedvale Ave. West | Guelph, ON | N1H 1C3
 BARRIE | 570 Bryne Drive Unit M | Barrie, ON | L4N 9P6

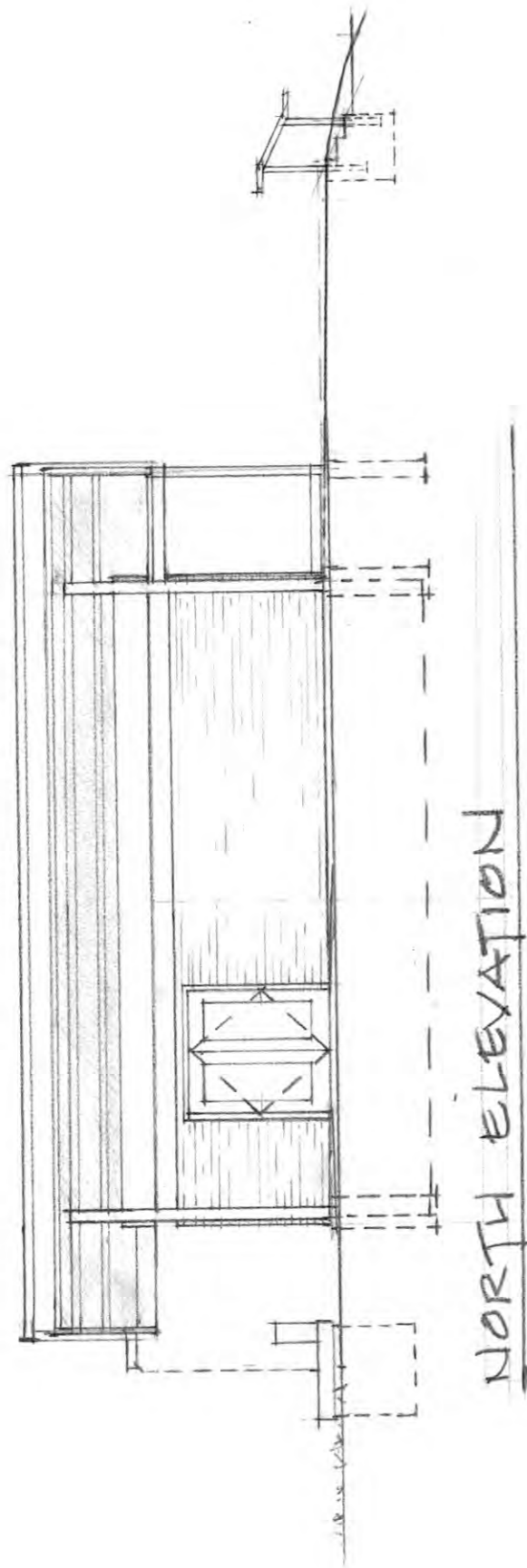
PROJECT ADDRESS
 Fred Hamilton Park
 & Roxton Road Parkette
 Toronto, Ontario

Project Name: Fred Hamilton Park	
Date	Issued for
03.Dec. 2013	Review

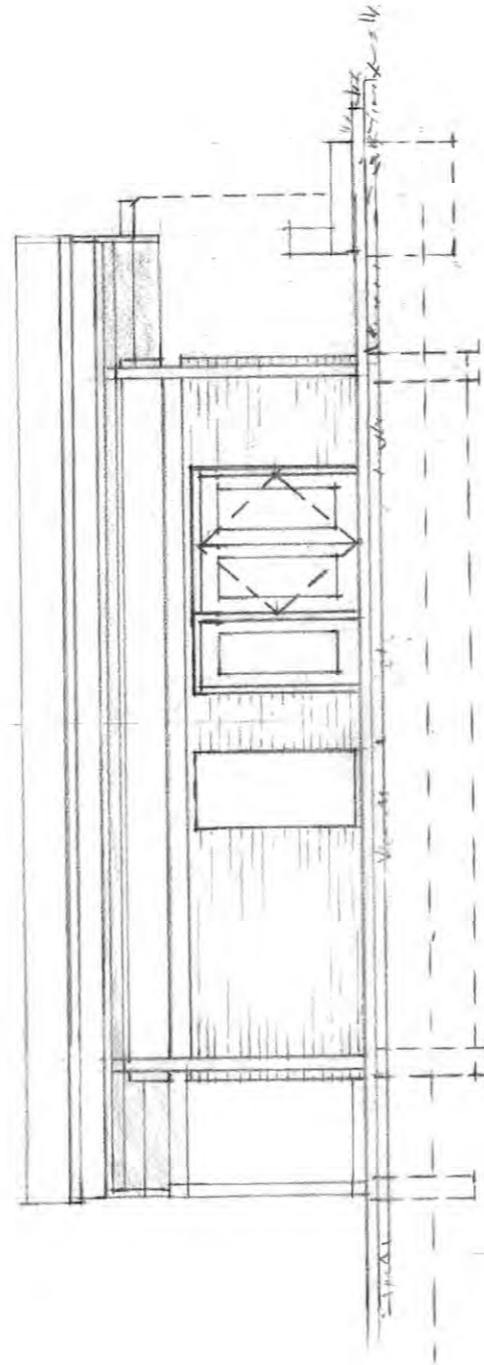
Toronto
 Parks Forestry & Recreation
 www.toronto.ca/parks

Drawn SH | Checked AK
 SCALE: 1:100

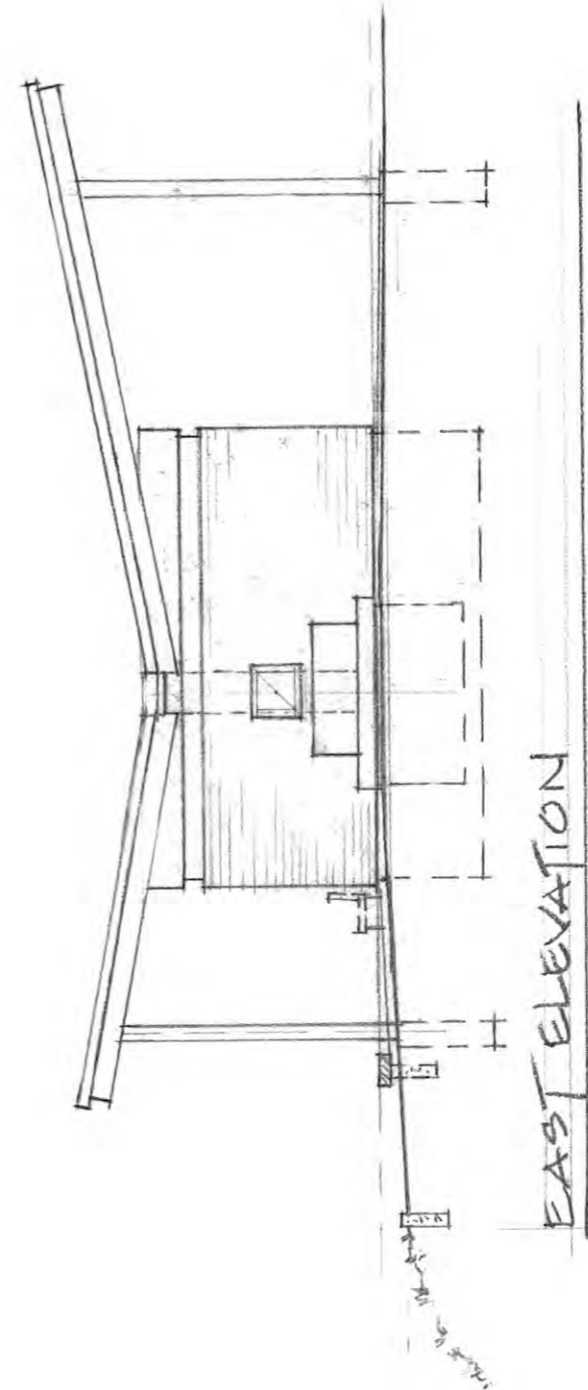
A03



NORTH ELEVATION



SOUTH ELEVATION



EAST ELEVATION

aka

T: 416.702.8511
F: 416.536.2671
info@akarchitect.ca
www.akarchitect.ca

allan killin architect inc.

ICOMOS AFFILIATE
INTRA-URBAN DESIGN 237 Grenadier Road
TORONTO ON M6R 1R9

**VICTOR FORD
AND ASSOCIATES INC**
Landscape Architects

955 Queen Street West, Loft 606
Toronto, Ontario M6J 3X5
Tel 416.703.0081
Fax 416.703.0083
design@victorford.ca

PNF
ENGINEERING INC.
BUILDING
SERVICES
ENGINEERS
4-1290 Eglinton Ave. E
Mississauga, ON, L4W 1K8
Tel. (905) 625-6322
Fax. (905) 625-0758
dragon@pnfeng.com

TACOMA
ENGINEERS
THE ART OF INTELLIGENT ENGINEERING

GUELPH | 176 Speedvale Ave. West | Guelph, ON | N1H 1C3
BARRIE | 570 Bryne Drive Unit M | Barrie, ON | L4N 9P8

PROJECT ADDRESS
Fred Hamilton Park
& Roxton Road Parkette
Toronto, Ontario

Project Name:
Fred Hamilton Park

Date	Issued for
03 Dec 2013	Review

TORONTO
Parks Forestry & Recreation
www.toronto.ca/parks

Drawn: SH | Checked: AK

SCALE: AS SHOWN

A 04